

MICROCLEAN SC E₂₀₀

MICROLUB SL S_{MART}

MICROLUB SL S₅₀₀

CLEANING – SC E and SC S

The Microclean SC E(ndless) series is our modern and efficient cleaning solution for various endless products, such as metallic punching strips, wires and tapes. Originally designed for the stamping and forming technology, it can be used as a stand-alone or an inline all-in-one cleaning station for almost any endless products. The Microclean SC S(ingle) series is complementing our portfolio, by adding a cleaning system for small and medium sized single parts. Both systems are based on the same modular kit of interchangeable parts, which can be seamlessly combined and fitted into your existing system solution. You're free to choose from a standard combination or a customized solution, based on evaluated test results with original parts to ensure the optimum cleaning results.

Available process modules:

- high-pressure cleaning up to 100 bar
- low-pressure cleaning up to 16 bar
- patented steam cleaning for hard-to-clean materials and surfaces
- brush cleaning in combination with high or low-pressure
- ultra-sonic cleaning
- compressed, heated air and vacuum drying

Features:

- environmentally friendly, closed, water-based system with integrated water treatment
- specific adaptation to individual and complex requirements due to modular design
- outstanding ease of maintenance
- basic structure and all wetted parts made from corrosion resistant stainless steel
- free width adjustment of guide rails
- entire media supply optimized regarding efficiency and prevention of dirt build-up
- modern and intuitive interfaces with free adjustment of all relevant process parameters in your chosen language



SPECIFICATION	
Dimensions per unit (length x width x height):	1000 mm per module x 2000 mm x 2400 mm
Electrical supply:	380 - 480 V 3~, 50/60 Hz
Air supply:	1/2" screw connection, 6 bar
Water supply:	1" screw connection, 3-6 bar
Part dimensions (width x height) / part width:	max. 200 mm x 200 mm / up to 200 mm
Conveyor direction / -height:	left to right or reversed / approx. 1100 mm

illustrations serve as reference



LUBRICATING – SL Smart

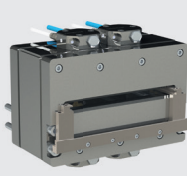
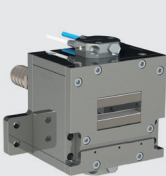
Impeccable quality and optimal tool protection even under extreme conditions are the key requirements of processing endless products, such as punching strips. Our SL Smart is a modular strip lubrication system and was designed to meet and surpass these expectations. Since its worldwide introduction it has proven itself as a reliable, ecological and economical application, by reducing total lubricant consumption up to 70 %. It is compact and easy to integrate, even in already existing production processes.

Equipment:

- sheet metal base structure, coated in RAL 1013 or 7035
- media supply with integrated treatment
- air extraction with filtering unit
- integrated control cabinet
- individually designed spaying chambers on request
- mobile panel/B2 Bruderer visualization

Features:

- enclosed and environmentally friendly system
- easy integrable in existing processes
- highly user-friendly and low-maintenance
- air extraction with integrated oil recovery system
- non-contact, replicable and even oil application
- selective oil application possible
- high dosing accuracy due to precision gear pump
- real time adjustment of spray volume
- up to 3 different oil/medium circuits possible
- punch lubrication possible
- open lubrication point possible
- Bruderer integration – further systems possible
- special applications possible
- separate nozzle switch-off possible
- modern and intuitive interfaces with free adjustment of all relevant process parameters in your chosen language



SPECIFICATION	
Dimensions (length x width x height):	800 mm x 460 mm x 1370 mm
Electrical supply:	230 V 1~, 380-480 V 3~, 50/60 Hz, 1,4 kVA
Air supply:	8 mm plug-in connection, 4 bar
Default width of spraying chambers:	60, 120, 180, 240, 300 mm, additional on request

illustrations serve as reference



PRESERVING – SL S500

The Microlub SL S(ingle) 500 is our preserving solution for small and medium sized single parts. It is designed as a universal stand-alone system for all-around spray-preservation of parts, directly placed on the stainless steel wire eye-let link belt or in conveyor cages. Loading and unloading can be done manually or with an external conveyor system.

Equipment:

- base structure made of sheet metal profiles coated in RAL 7035
- spraying chamber and all wetted parts made from corrosion resistant stainless steel
- stainless steel wire eyelet link belt, powered by frequency-controlled drum drive
- up to 16 all-around placed two-substance nozzles, with individual position and angle adjustment
- 3-step air filter system
- integrated control cabinet
- fixed control panel with touch function

Features:

- closed media supply with integrated treatment
- easy all-around adjustment of nozzles in accordance to parts geometry
- wheeled machine feet for easy positioning
- outstanding ease of maintenance
- integration into inline solution on request
- modern and intuitive interfaces with free adjustment of all relevant process parameters in your chosen language



SPECIFICATION	
Dimensions (length x width x height):	2450 mm x 1200 mm x 1900 mm
Electrical supply:	380 - 480 V 3~, 50/60 Hz
Air supply:	1/4" plug-in connection, 6 bar
Part dimensions (width x height) / weight:	max. 500 mm x 200 mm / max. 35 kg
Conveyor direction / height:	left to right or reversed / approx. 1100 mm
Conveyor speed:	adjustable up to 3 m/min

illustrations serve as reference

